

## Suzuki GT750 LMAB RH Carburettor oil pump linkage ball joint repair kit

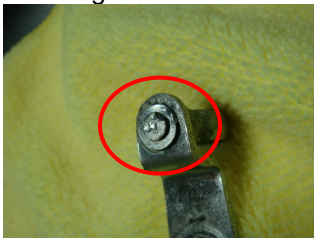
### Kit components (Left to right):

- 1 x 4mm bronze lined rose joint
- 1 x Flat washer M4 SS
- 1 x "Wave" spring washer
- 1 x brass bush – specially machined
- 1 x serrated flange nut M4 SS



### Installation instructions (Rev 1.2 Aug 2008):

- 1) Remove the old ball joint from the carburettor arm by grinding (or filing) the back of the spindle to be level with the retaining washer.



Then, using a small flat bladed screwdriver, lever off the retaining washer and remove the old ball joint

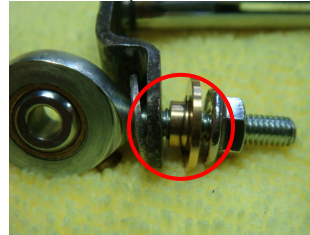


- 2) Check the bearing surfaces of the linkage arm and clean up or straighten as appropriate to provide flat surfaces on

both sides (do **NOT** remove excess metal)



- 3) Assemble the kit onto the arm as shown below (make sure that the small wave washer is placed onto the brass bush).



- 4) For added security, apply some thread-lock to the final part of the thread that the M4 serrated nut will sit on when tightened.

- 5) Fully tighten the serrated M4 flange nut (the serrations will bite into the surface of the brass bush flange and lock tight)

- 6) Check that movement is free and even, and that the ball lubrication nipple is facing **DOWN** and not catching on the carburettor arm (the nipple can be ground or filed back if required)



- 7) Using a junior hacksaw or Dremel cutting disc, cut the excess threaded portion flush with the nut.



- 8) Finally, apply a small amount of oil to the joint and the ball. **Lubricate regularly.**